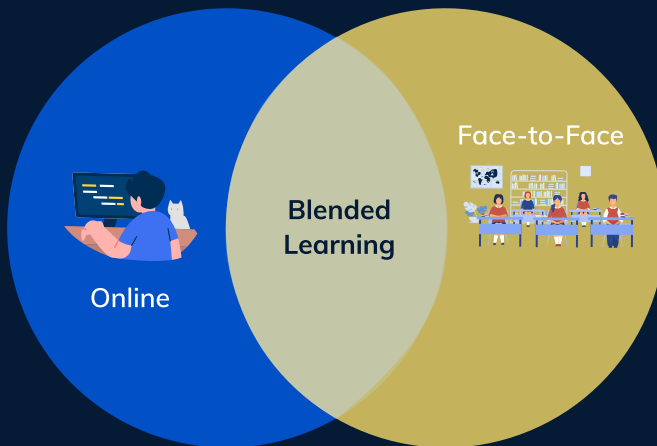


Why **Blended** Learning?



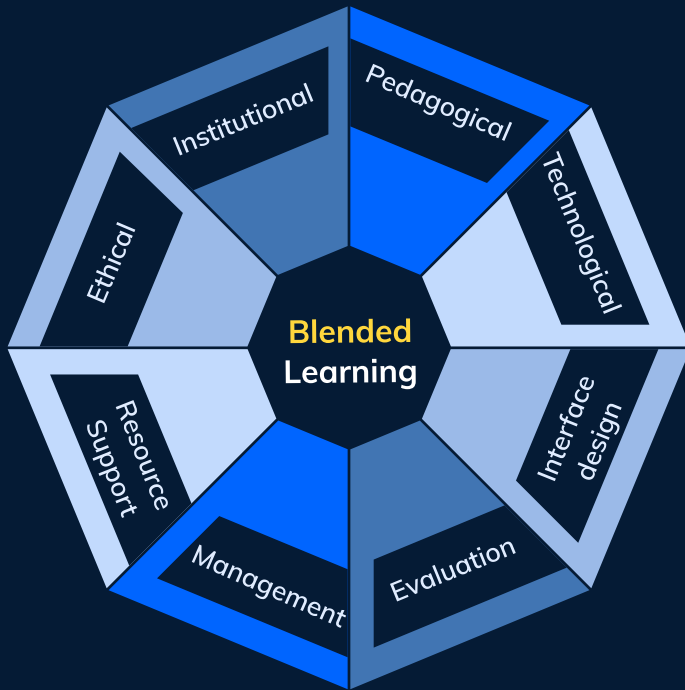
Organizations must use a blend of learning approaches in their strategy to get the right content in the right format to the right people at the right time.

Why **Blended** Learning?



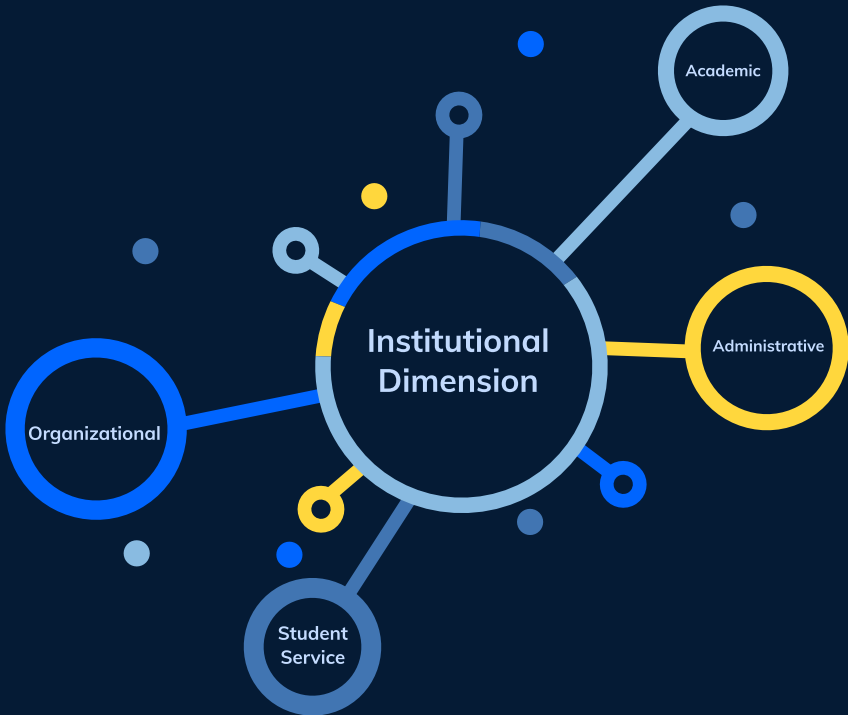
Blended learning combines multiple delivery media that are designed to complement each other and promote learning and application-learned behavior.

Blended Learning Framework



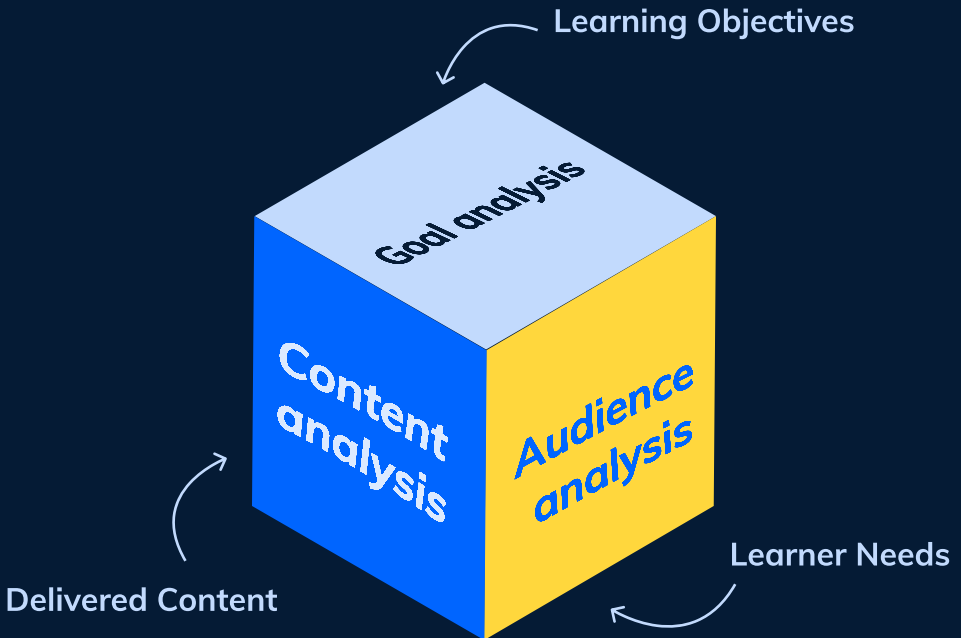
Khan's framework serves as a guide to plan, develop, deliver, manage, and evaluate blended learning programs.

Institutional



Personnel involved in the planning of a learning program could ask questions related to the readiness of the organization, availability of content and infrastructure, and learners' needs.

Pedagogical



The pedagogical dimension also encompasses the design and strategy aspect of e-learning.

Technological



This dimension addresses the need for the most suitable learning management system (LMS) that would manage multiple delivery types .

Interface Design



The interface has to be sophisticated enough to integrate the different elements of the blend. This will enable the learner to use each delivery type and switch between the different types.

Evaluation



Blended Learning Program

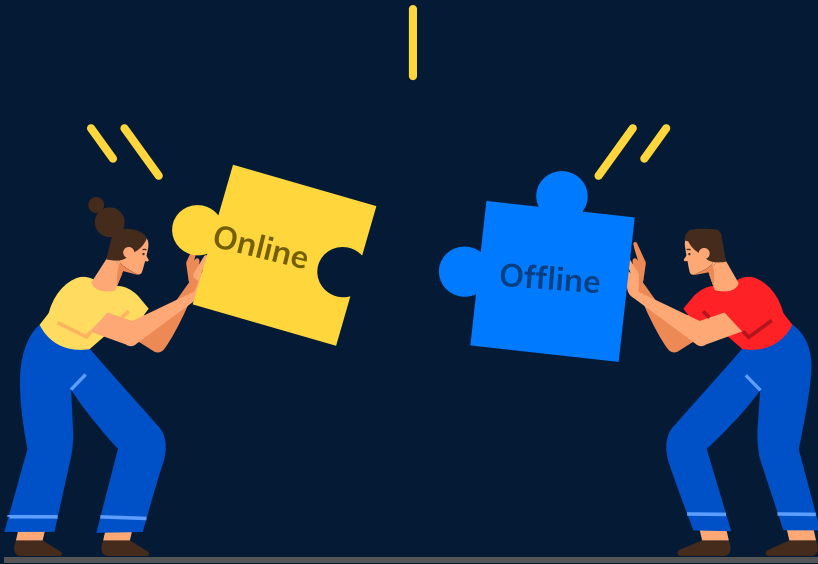
The evaluation dimension is concerned with the usability of a blended learning program. The program should not only have the capability to evaluate how effective a learning program has been but also measure the performance of each learner.

Management



The management dimension addresses issues for each delivery type such as infrastructure and logistics, registration and notification, and scheduling of the different elements of the blend.

Resource Support



The resource support dimension deals with making different types of resources (face to face and online) available for learners as well as organizing them.

Ethical



Designed by Freepik

The ethical dimension identifies the ethical issues that need to be addressed when developing a blended learning program. Issues such as equal opportunity, cultural diversity, and nationality should be addressed.

We hope it was informative!



Get a free trial of Smart Courses for **Confluence**- LMS

Blended Learning is an effective method
espacially during these unstable and confusing
times!