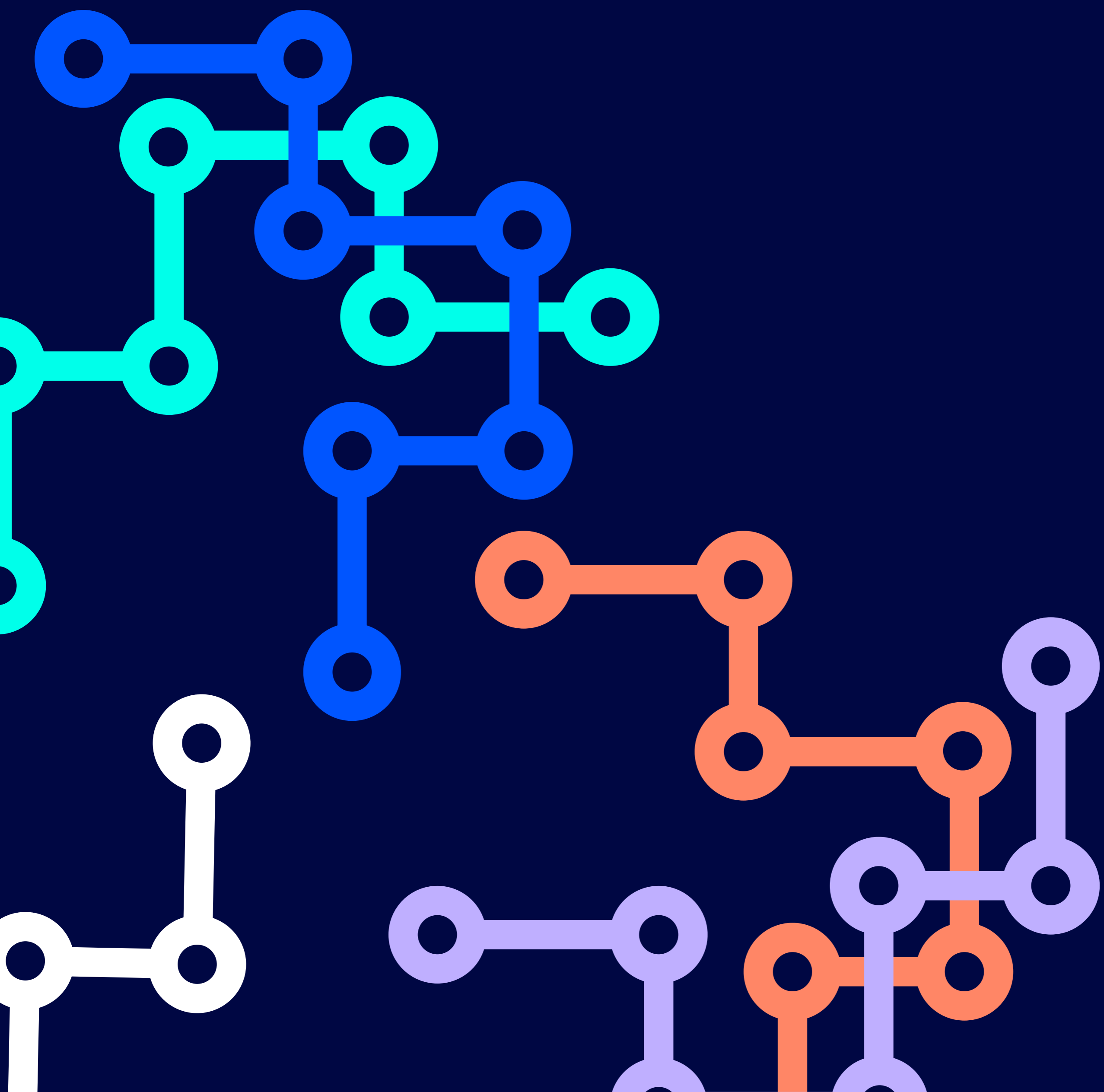


How to create related terms within Confluence

Smart Terms for Confluence



Why to use related terms and how to elevate your glossary:

Improved understanding: Related terms clarify complex concepts in your glossary.

Enhanced navigation: Easily navigate your glossary with direct links between related terms.

Foster collaboration: Promote team collaboration and knowledge sharing with clear terminology.

Enhance searchability: Find relevant information quickly with linked terms.

Streamlined communication: Ensure clear communication with standardised terminology.

Increased discoverability: Explore related topics effortlessly for deeper insights.

Enriched Content: Expand your knowledge with additional context and cross-references.

Encourage innovation: Explore new connections and perspectives for innovative insights.

Enable personalisation: Tailor your glossary experience to your specific needs and interests.

Drive engagement: Spark curiosity and encourage exploration with interconnected content.

How to start: create relations and link terms



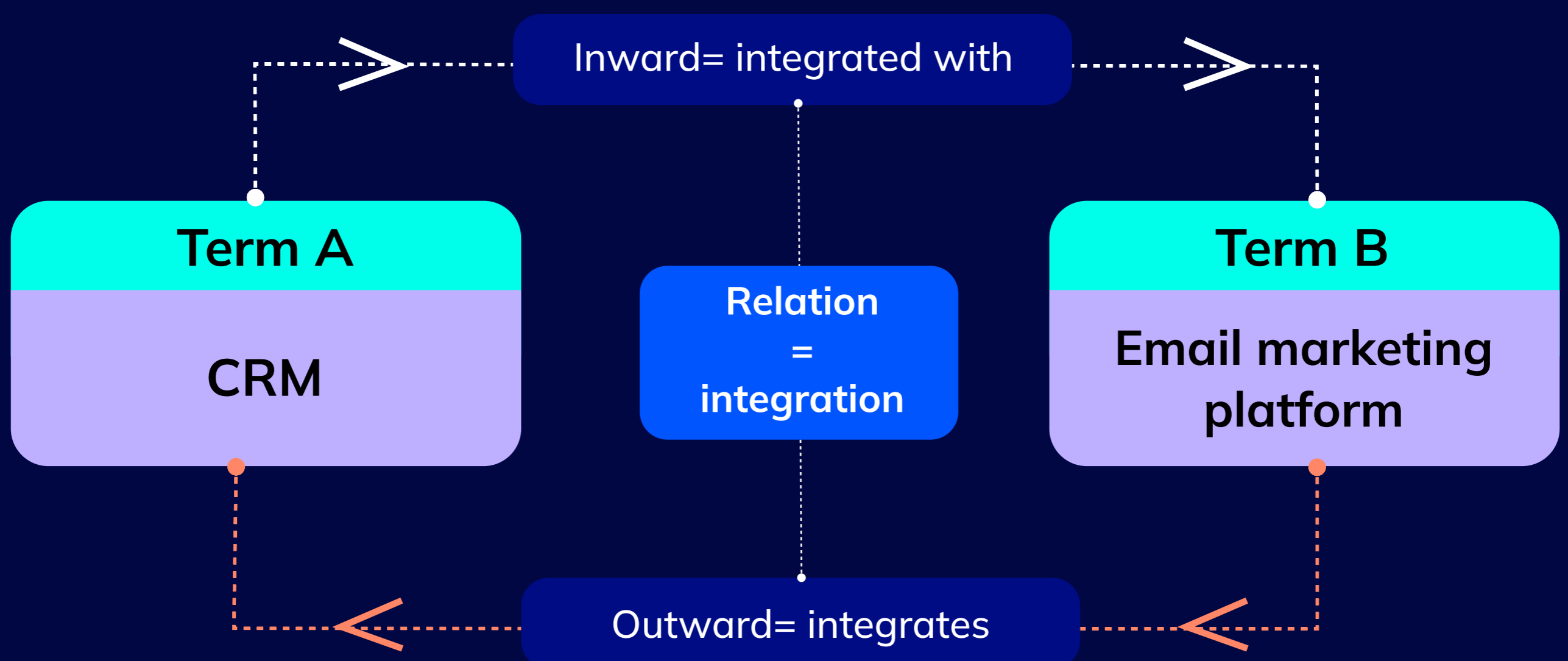
Only Confluence admins can create and manage relations!

Start with creating the relation type. It should be a unique relation name with an inward and an outward description.

Inward: This articulates how the first term relates to the second term, highlighting the perspective of the first term. For example, with Term A as "CRM Software" and Term B as "Email Marketing Platform," the inward description "Integrated with" signifies that Term A (CRM Software) is integrated with Term B (Email Marketing Platform), facilitating seamless data sharing or functionality between them.

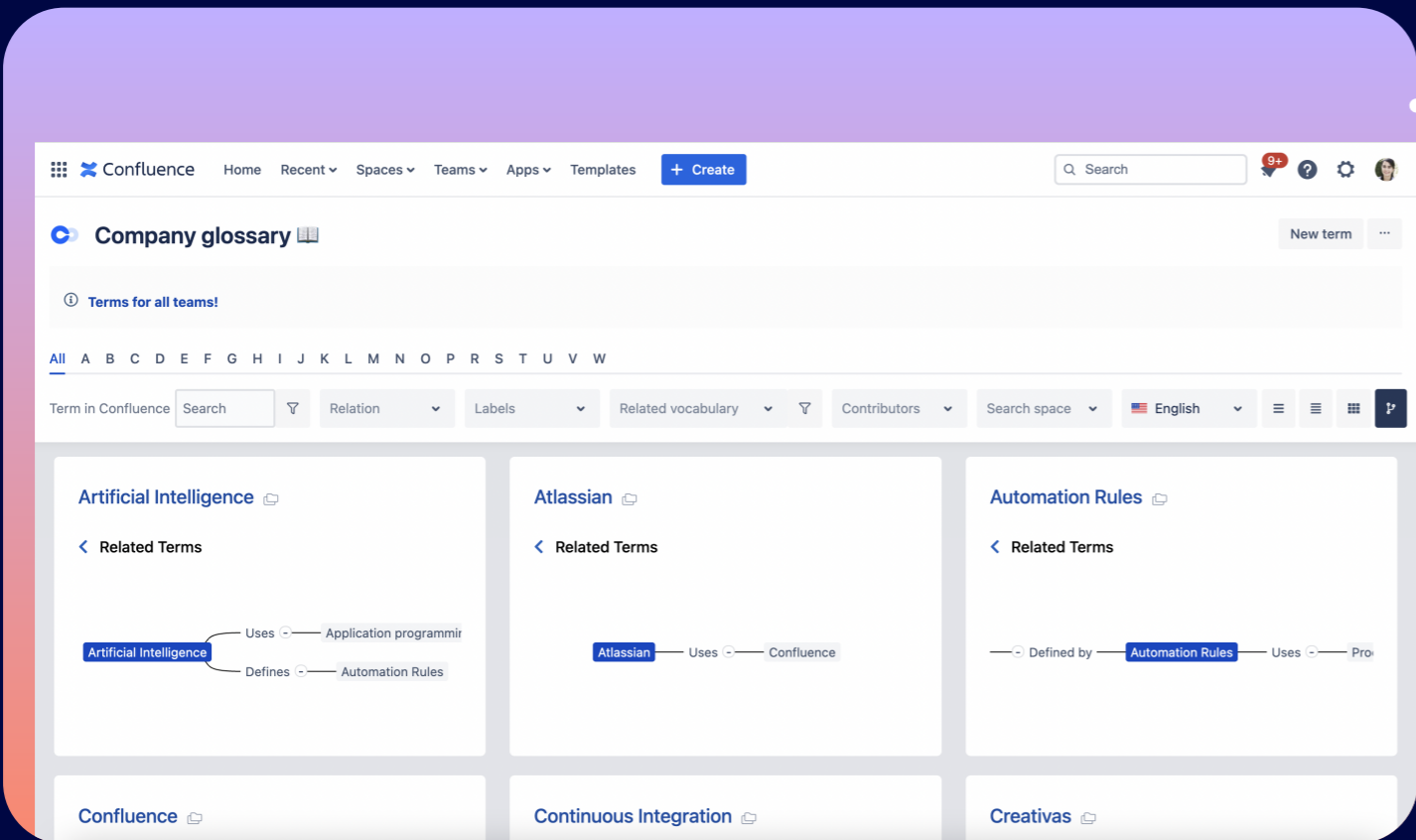
Outward: Conversely, the outward description explains how the second term relates to the first term, emphasizing the viewpoint of the second term. In the given instance, if the outward description is "Integrates," it signifies that Term B (Email Marketing Platform) integrates with Term A (CRM Software), implying a mutually beneficial relationship where Term B incorporates functionalities or data from Term A.

Let's visualise this:

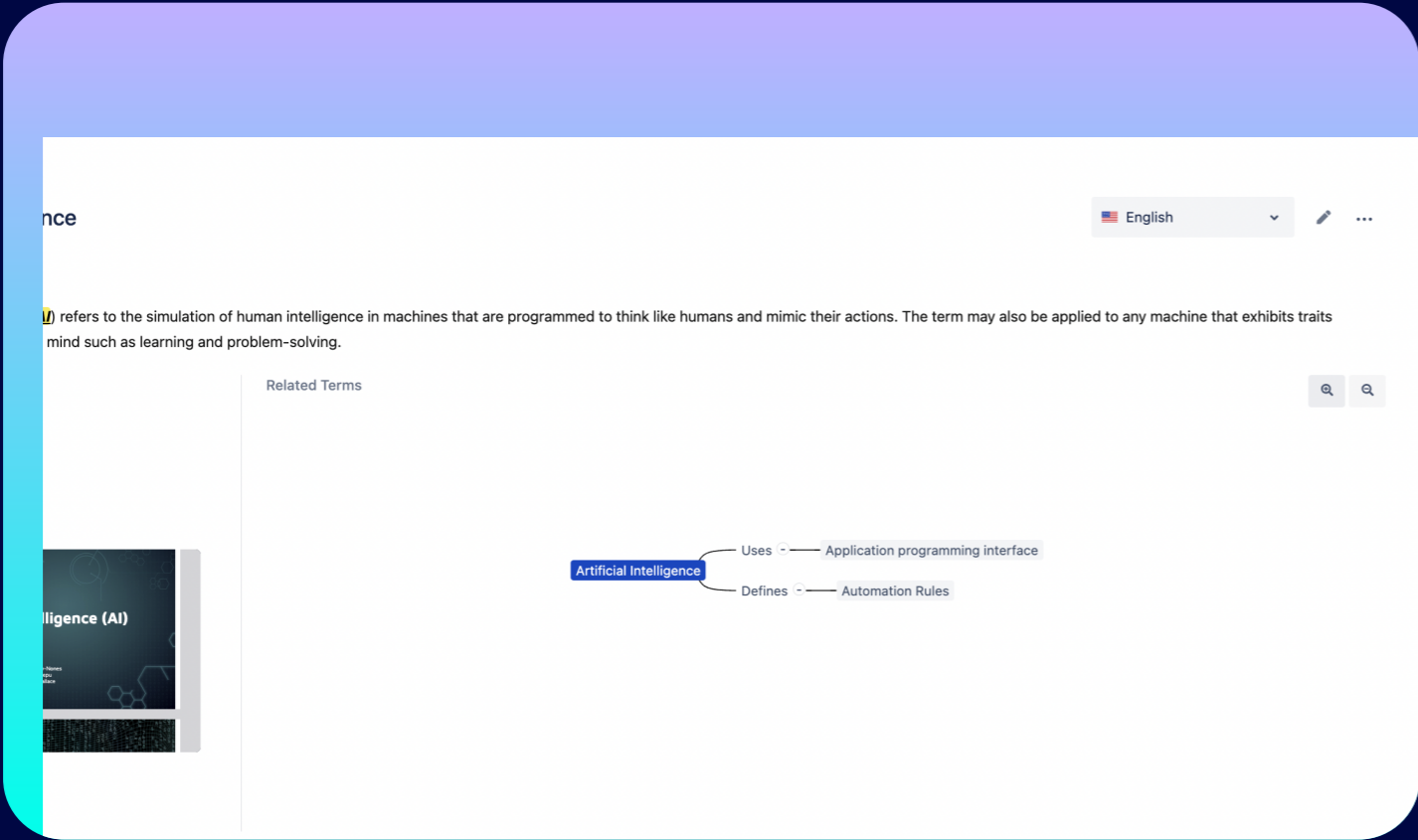


Relations display: where to find the relations

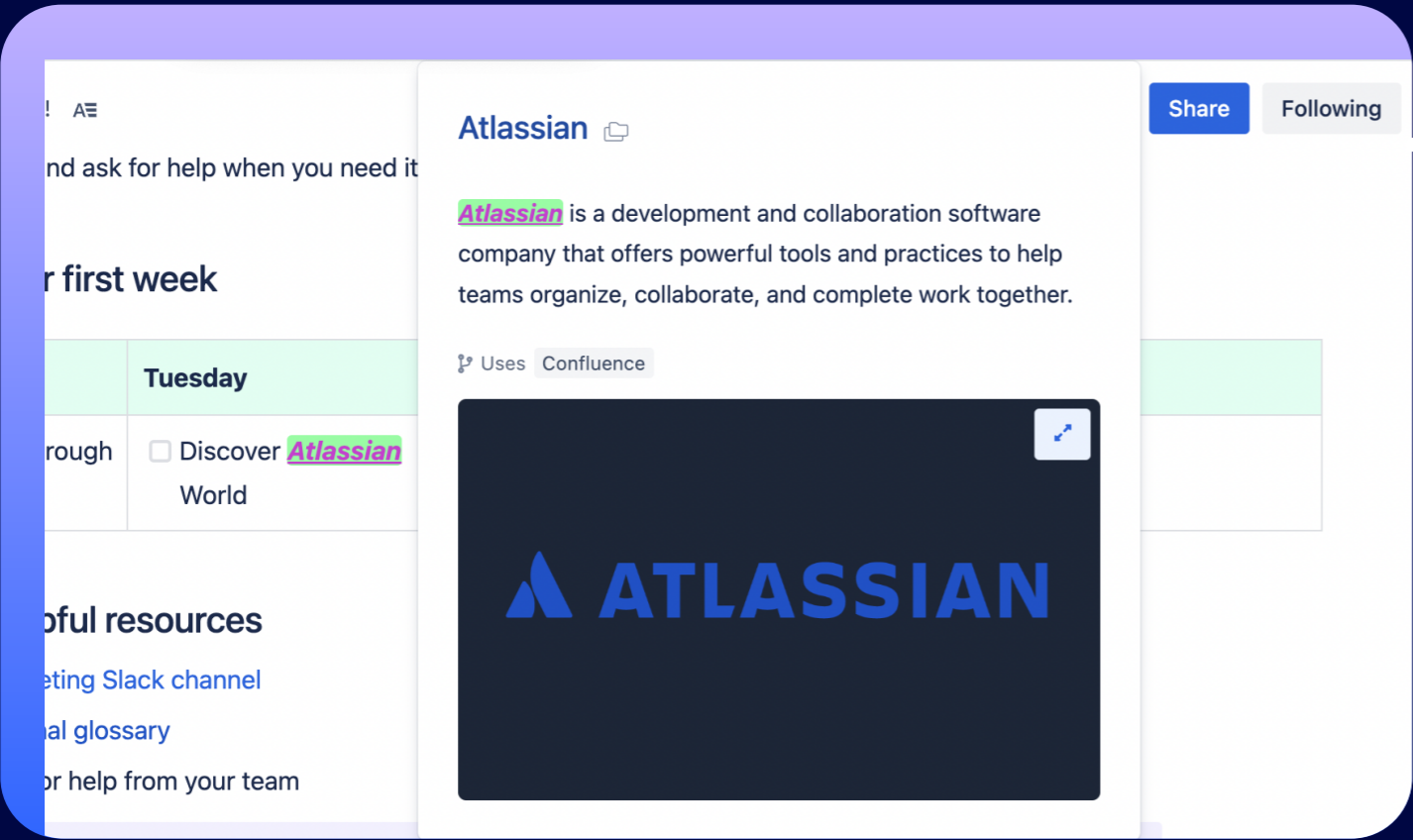
Once relations are created from the app global configuration, terms are linked to each other from the term editor, you will see them displayed within the term viewer, highlight popup, and the glossary under the graph mode.



Graph display mode



Term viewer



Term highlight popup